



Service public de Wallonie

LANDFILL OF WASTE IN WALLONIA: TRANSPOSITION OF 1999/31/EC GROUNDWATER PROTECTION PLAN AND TRIGGER LEVELS BASED ON LONG TERM MONITORING RESULTS

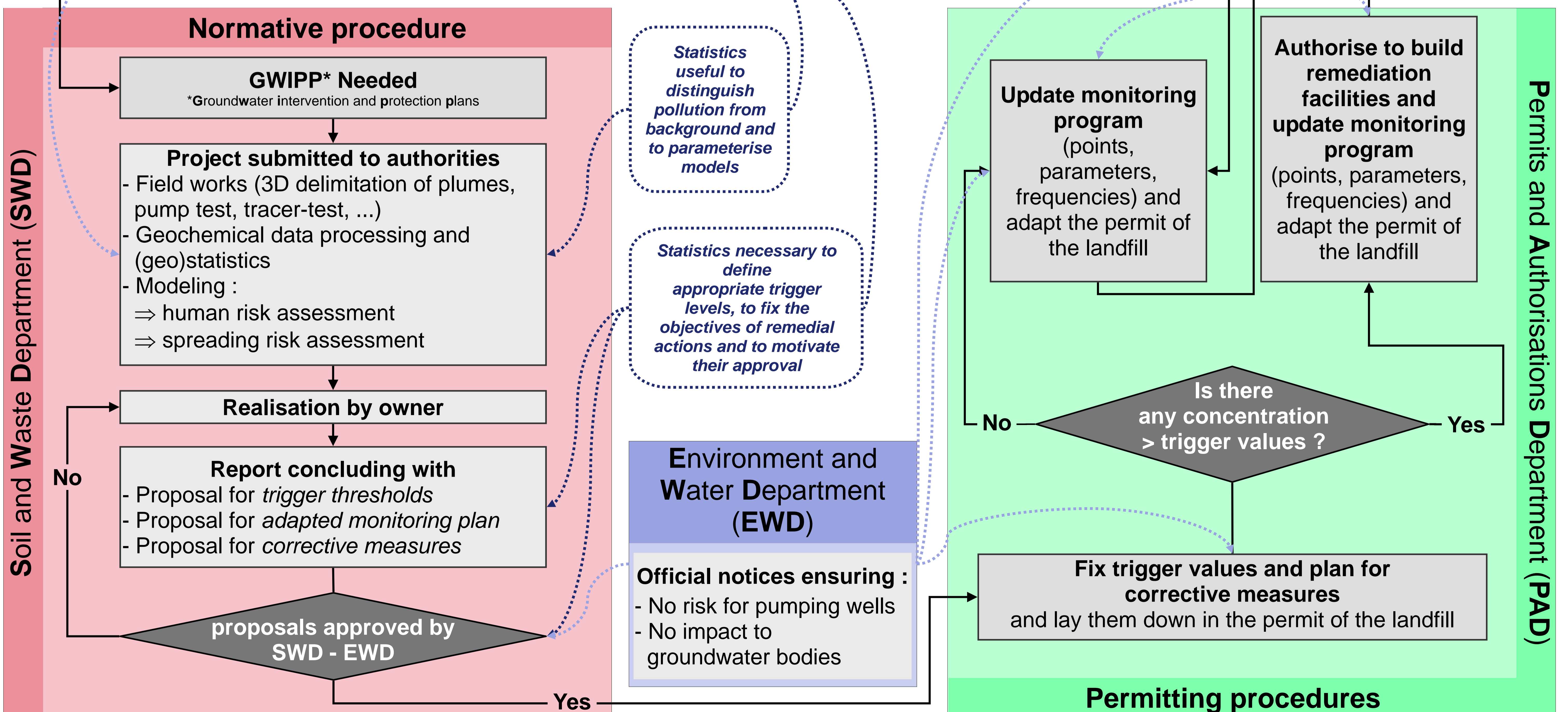
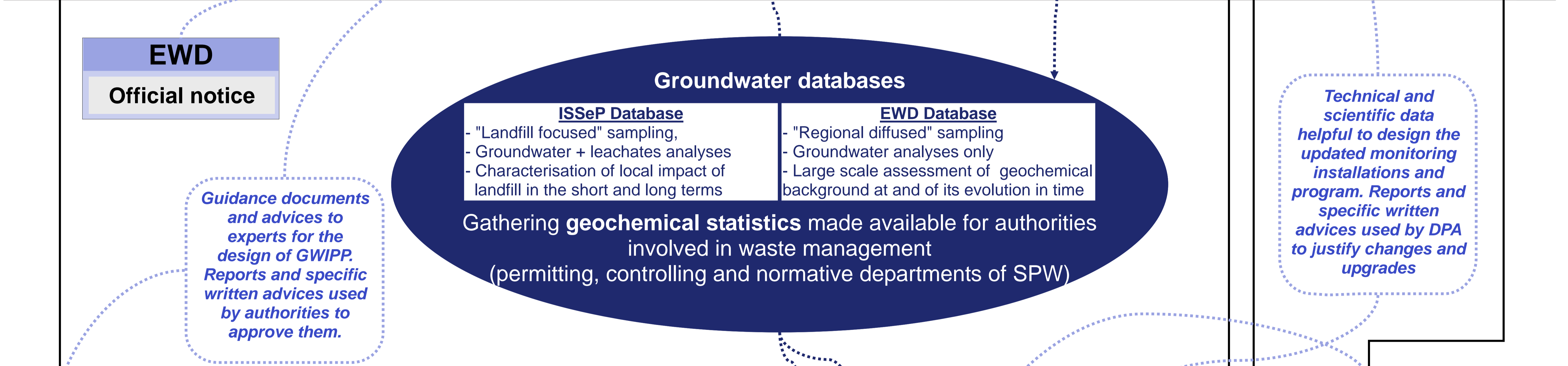
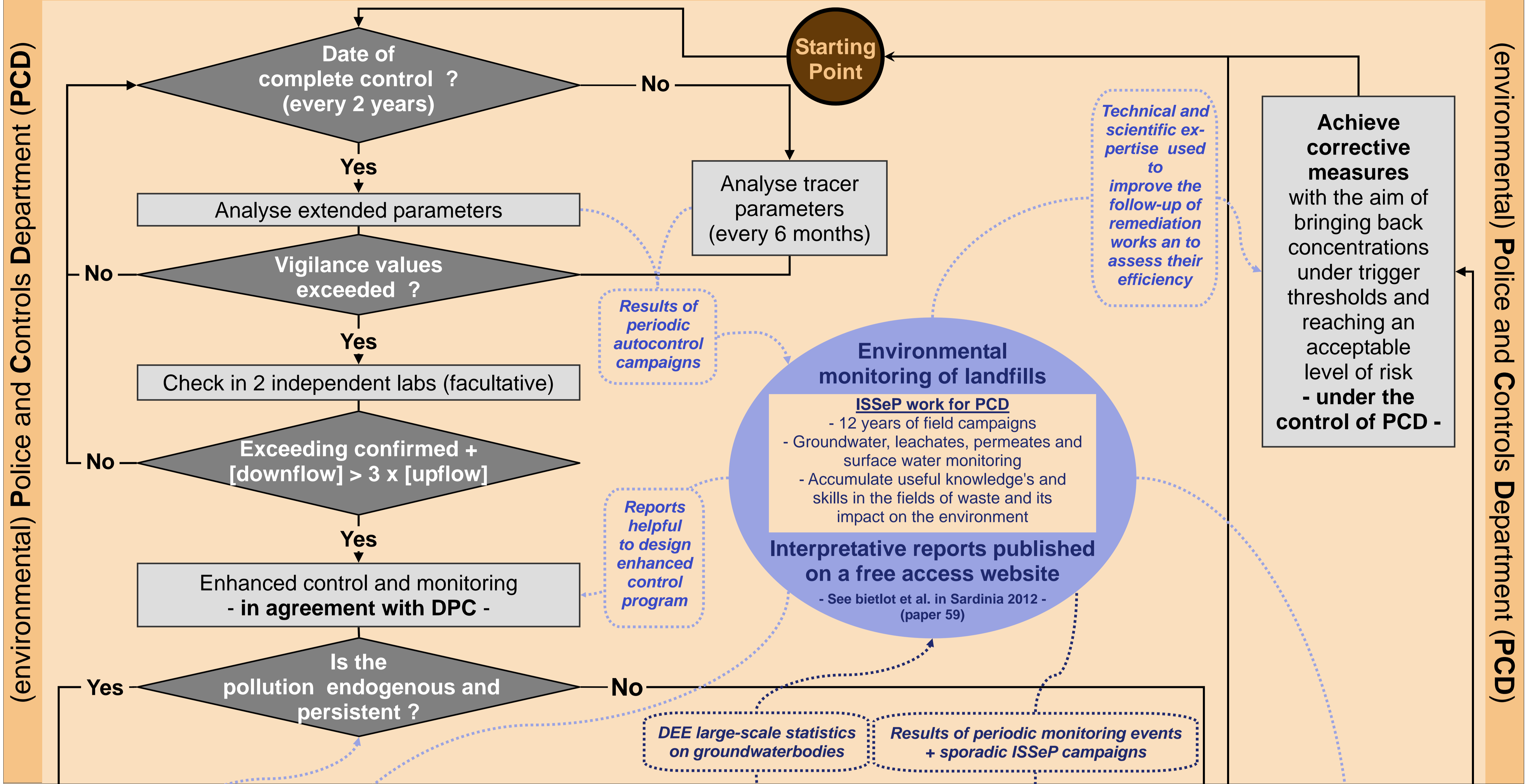
V. LEBRUN*, F. DELLOYE**, E. BIETLOT*, O. LE BUSSY*, C. COLLART*

* ISSeP: Institut Scientifique de Service Public, Department of Environmental Survey, rue du Chéra, 200, 4000, Liège, Belgium
 ** SPW-EWD-GD: Service Public de Wallonie, Environment and Water Department, Groundwater Direction, Namur, Belgium



Work supported by the environmental authorities of Wallonia (SPW-DGO3 : (environmental) Police and Controls Department - PCD), within the framework of a Municipal Solid Waste Landfill surveying network (Website : <http://environnement.wallonie.be/data/dechets/cet/>)

Monitoring and control procedures



Legend : [Action] step of the procedure [question?] Decisional criterion [Official procedure pathway] [results] Fluxes of knowledge's, advices, guidance, reports [data] Fluxes of geochemical statistics

