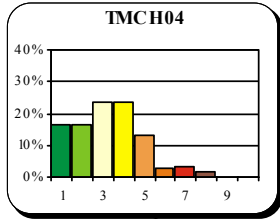
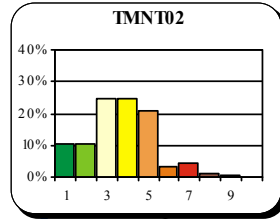


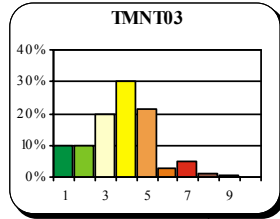
LODELINSART



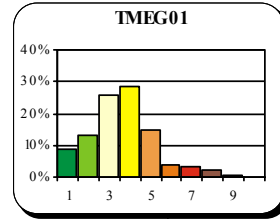
CORROY



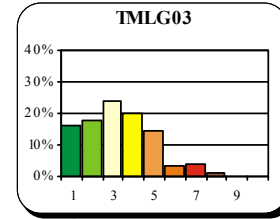
VEZIN



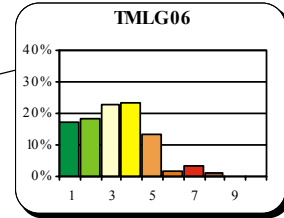
ENGIS



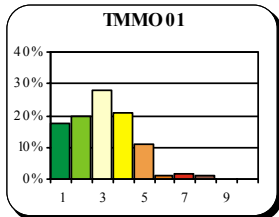
LIEGE



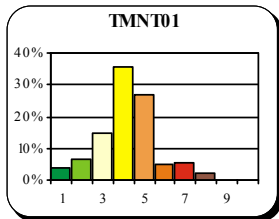
LIEGE



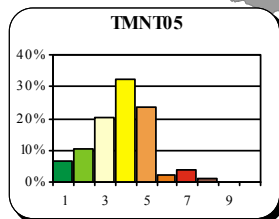
MONS



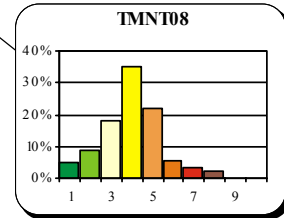
DOURBES



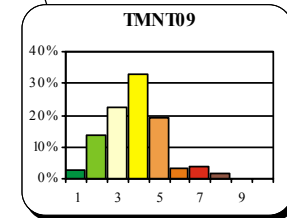
SINSIN



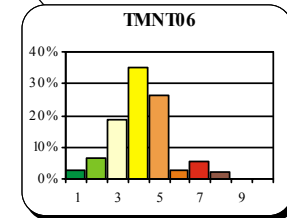
EUPEN



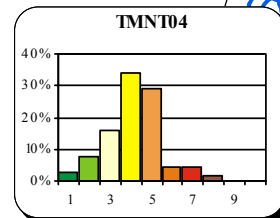
VIELSALM



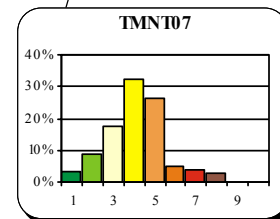
SAINTE-ODE



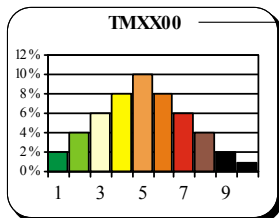
OFFAGNE



HABAY



Ozone 2005



Code station

- | | |
|---|---|
| ■ 1. Excellent | ■ 6. Médiocre |
| ■ 2. Très bon | ■ 7. Très médiocre |
| ■ 3. Bon | ■ 8. Mauvais |
| ■ 4. Assez bon | ■ 9. Très mauvais |
| ■ 5. Moyen | ■ 10. Exécrable |

Répartition des indices journaliers

Carte 4 : Ozone 2005 - Indices de pollution