

MARCHIENNE

CHARLEROI

LODELINSART

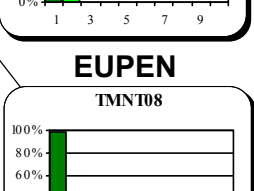
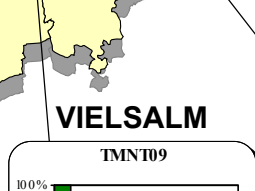
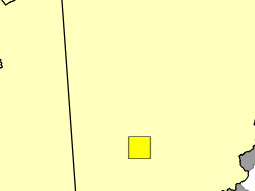
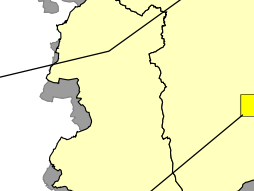
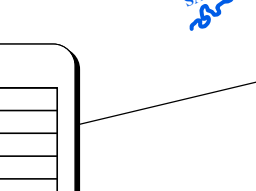
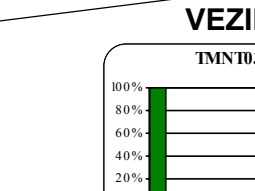
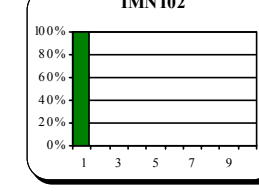
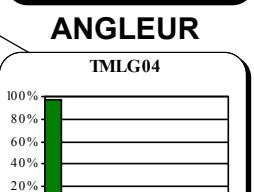
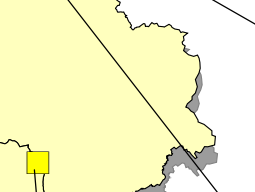
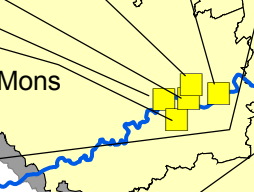
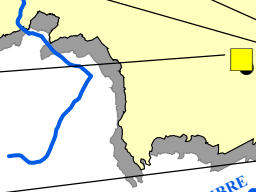
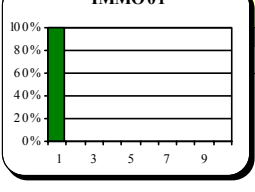
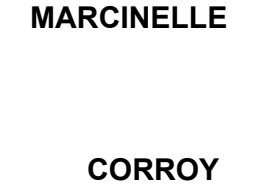
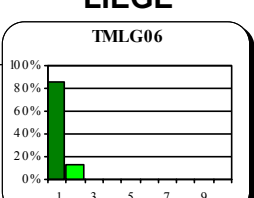
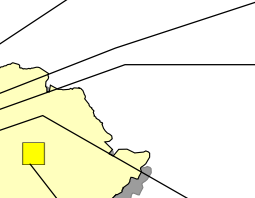
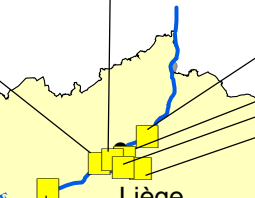
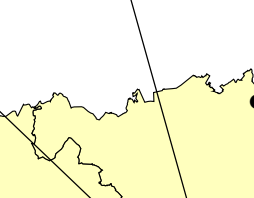
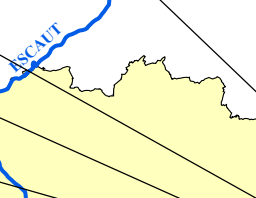
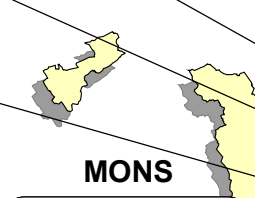
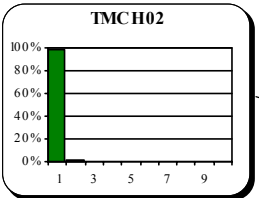
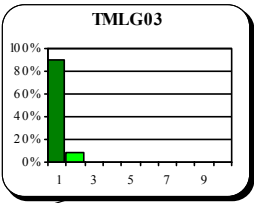
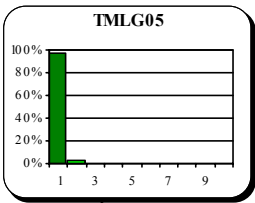
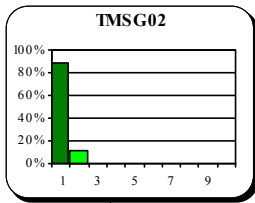
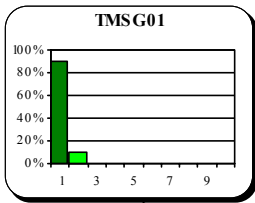
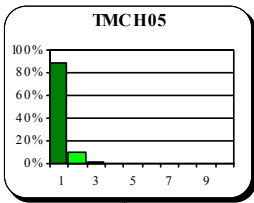
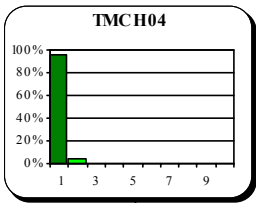
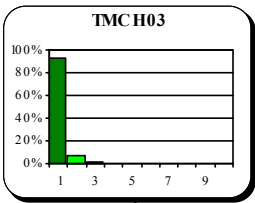
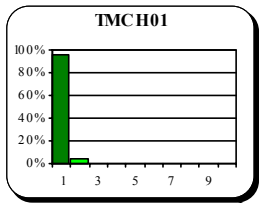
CHATELNEAU

JEMEPPE

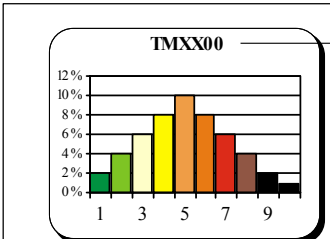
St-NICOLAS

HERSTAL

LIEGE

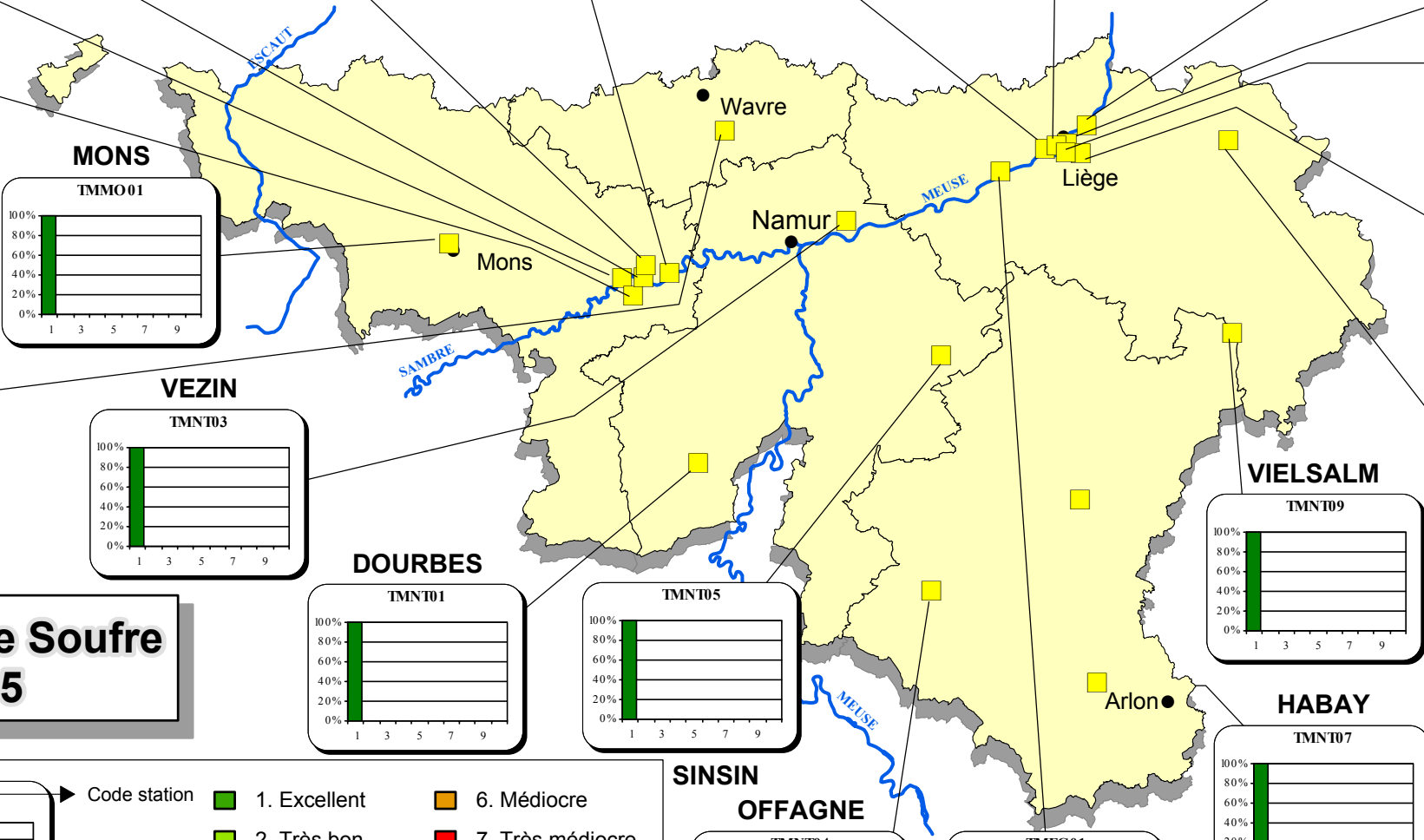


Dioxyde de Soufre 2005

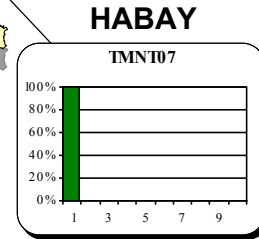
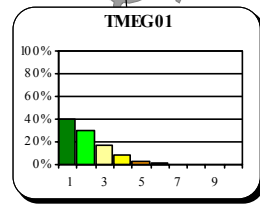
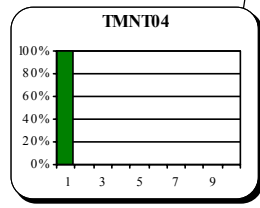


- Code station
- 1. Excellent
 - 2. Très bon
 - 3. Bon
 - 4. Assez bon
 - 5. Moyen
 - 6. Médiocre
 - 7. Très médiocre
 - 8. Mauvais
 - 9. Très mauvais
 - 10. Exécrable

Répartition des indices journaliers



SINSIN OFFAGNE



Carte 1 : Dioxyde de soufre 2005 - Indices de pollution