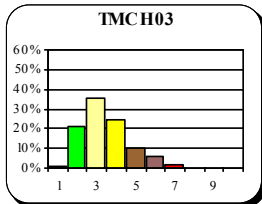
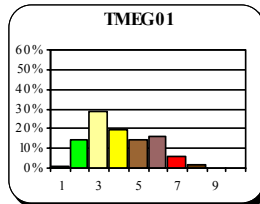


Particules en suspension (PM10) 2005

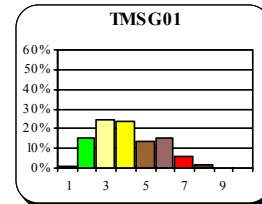
CHARLEROI



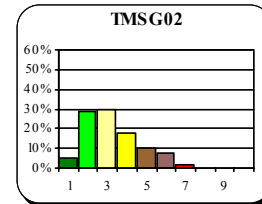
ENGIS



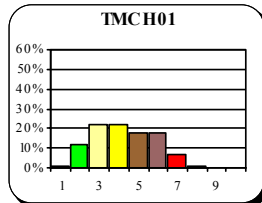
JEMEPPE



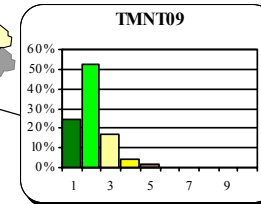
St-NICOLAS



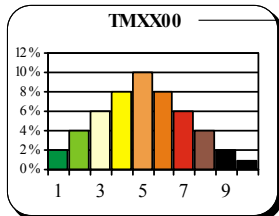
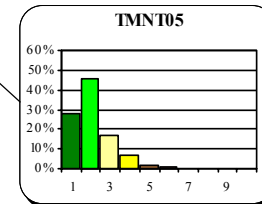
MARCHIENNE



VIELSALM



SINSIN



Code station

- | | |
|--------------|------------------|
| 1. Excellent | 6. Médiocre |
| 2. Très bon | 7. Très médiocre |
| 3. Bon | 8. Mauvais |
| 4. Assez bon | 9. Très mauvais |
| 5. Moyen | 10. Exécrable |

Répartition des indices journaliers

Carte 11 : Particules en suspension (PM10) 2005 - Indices de pollution