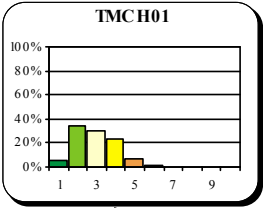
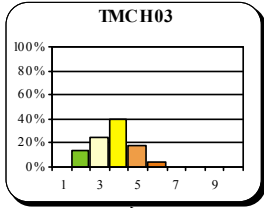


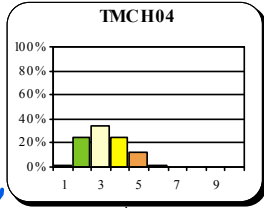
MARCHIENNE



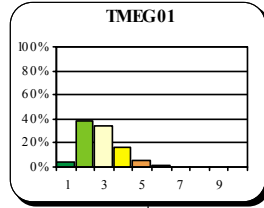
CHARLEROI



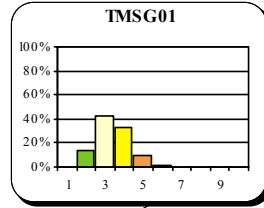
LODELINSART



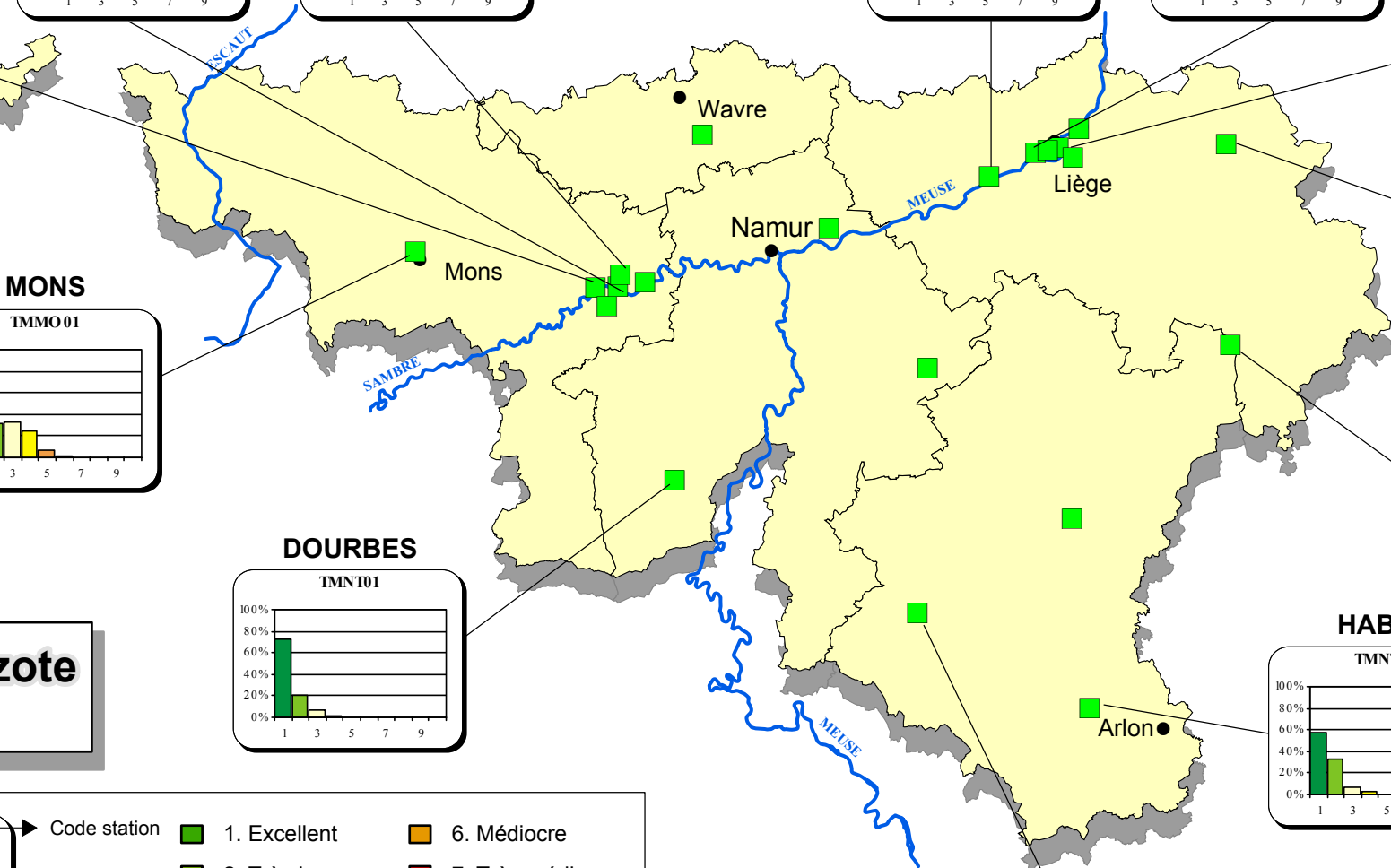
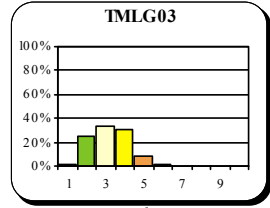
ENGIS



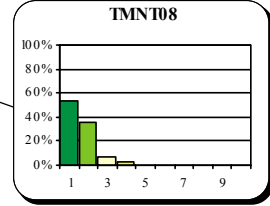
JEMEPPE



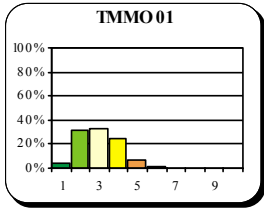
LIEGE



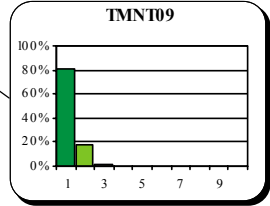
EUPEN



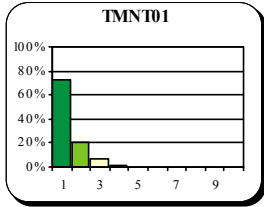
MONS



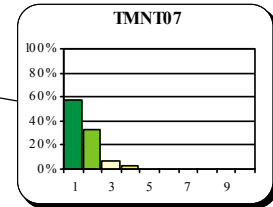
VIELSALM



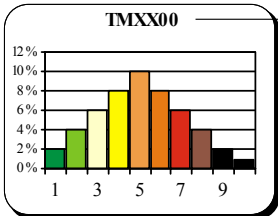
DOURBES



HABAY



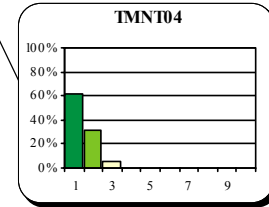
Dioxyde d'azote 2004



- Code station
- | | |
|--------------|------------------|
| 1. Excellent | 6. Médiocre |
| 2. Très bon | 7. Très médiocre |
| 3. Bon | 8. Mauvais |
| 4. Assez bon | 9. Très mauvais |
| 5. Moyen | 10. Exécrable |

Répartition des indices journaliers

OFFAGNE



Carte 2 : Dioxyde d'azote 2004 - Indices de pollution