

### MARCHIENNE

### CHARLEROI

### LODELINSART

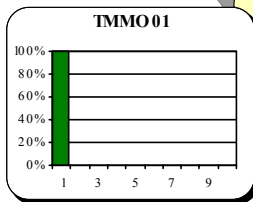
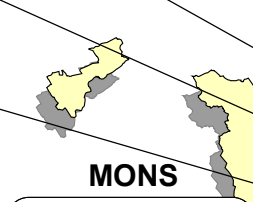
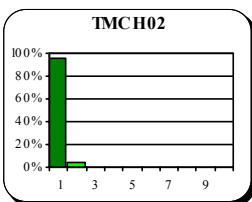
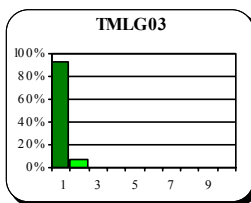
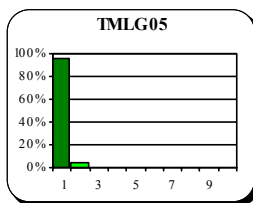
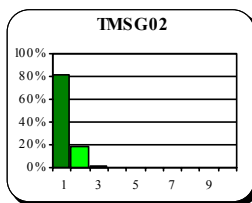
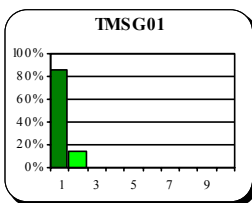
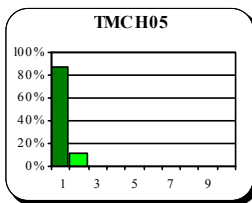
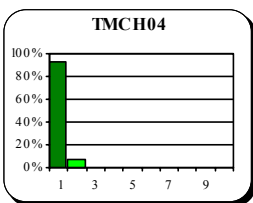
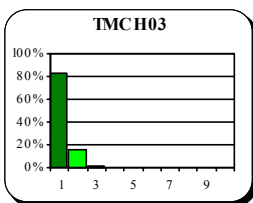
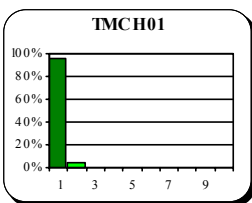
### CHATELINEAU

### JEMEPPE

### St-NICOLAS

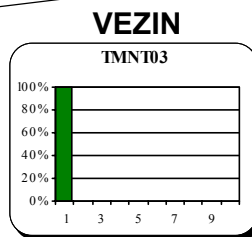
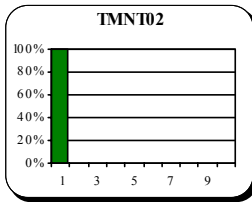
### HERSTAL

### LIEGE



### MARCINELLE

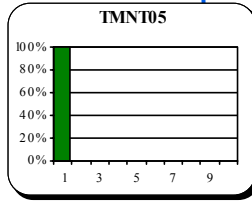
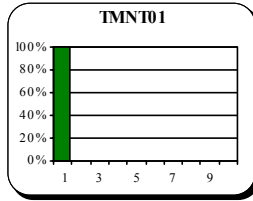
### CORROY



### VEZIN

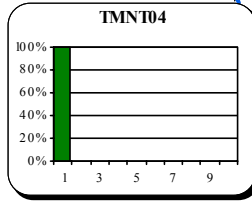
## Dioxyde de Soufre 2004

### DOURBES

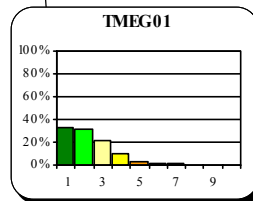


### SINSIN

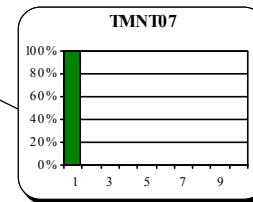
### OFFAGNE



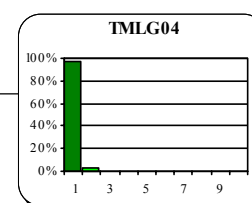
### ENGIS



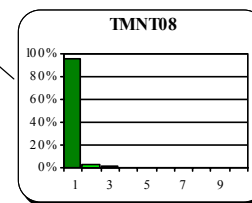
### HABAY



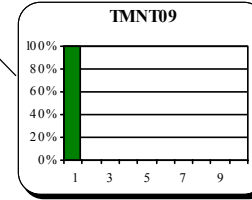
### ANGLEUR



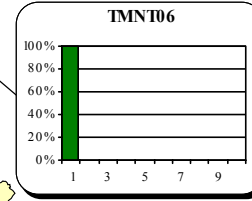
### EUPEN



### VIELSALM

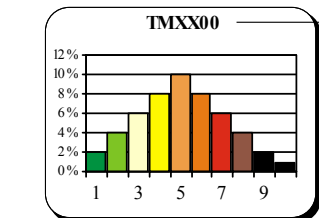


### St ODE



Code station

- |   |   |
|---|---|
| <span style="color: green;">■</span> 1. Excellent     | <span style="color: orange;">■</span> 6. Médiocre   |
| <span style="color: lightgreen;">■</span> 2. Très bon | <span style="color: red;">■</span> 7. Très médiocre |
| <span style="color: yellow;">■</span> 3. Bon          | <span style="color: brown;">■</span> 8. Mauvais     |
| <span style="color: gold;">■</span> 4. Assez bon      | <span style="color: grey;">■</span> 9. Très mauvais |
| <span style="color: orange;">■</span> 5. Moyen        | <span style="color: black;">■</span> 10. Exécrable  |



Répartition des indices journaliers

Carte 1 : Dioxyde de soufre 2004 - Indices de pollution